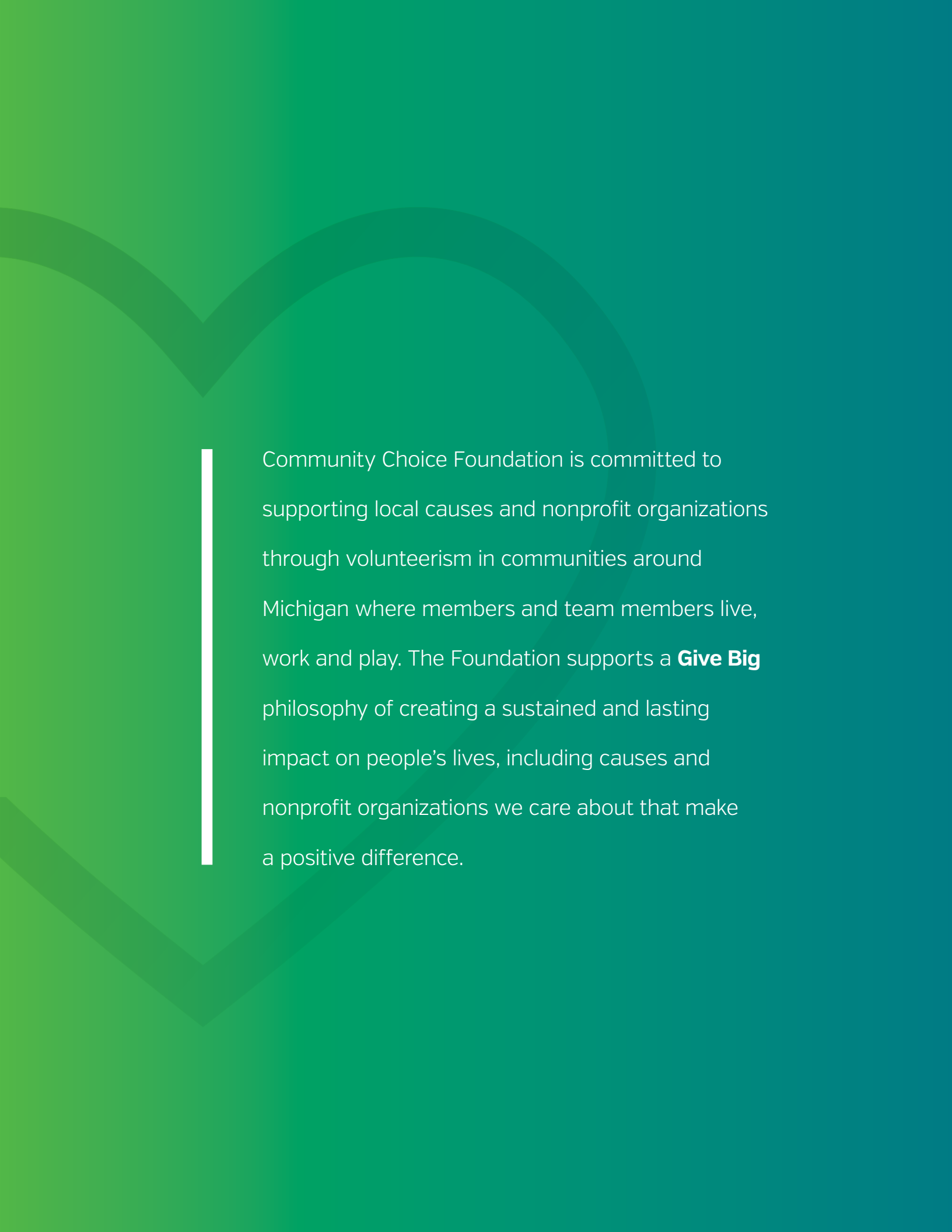




2022 IMPACT REPORT

# giving **BIG**

**communitychoice**  
FOUNDATION



Community Choice Foundation is committed to supporting local causes and nonprofit organizations through volunteerism in communities around Michigan where members and team members live, work and play. The Foundation supports a **Give Big** philosophy of creating a sustained and lasting impact on people's lives, including causes and nonprofit organizations we care about that make a positive difference.

# It Takes a Village

## Lasting Impact Through Community Philanthropy

When I accepted the position of Executive Director for the Community Choice Foundation in September 2022, I knew that I would be affiliated with a great group of team members who truly care about the places where they live and work.

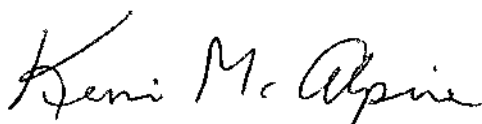
It was inspiring to learn that by accepting this role I would have the opportunity to work alongside my new colleagues on our “Give Big” efforts. The charitable arm of Community Choice Credit Union increases our collective impact around the state.

I can report that the Foundation met its goal of providing \$100,000 in scholarships and making a positive impact in our communities through thousands of hours of team member and member volunteerism in 2022. Over the next year, we will invite Community Choice Credit Union members to have an even greater impact by supporting scholarships, making a difference in local causes and nonprofit organizations, and joining Community Choice team members in volunteering in the community.

We are proud to lead our efforts to Give Big by creating a sustained and lasting impact on causes and nonprofit organizations across Michigan. We are committed to making education more accessible and affordable for individuals and to support a diverse talent pipeline. Additionally, we are humbled to recognize organizations that are making a difference in our communities across the state.

As the saying goes, it “takes a village,” to get something worthwhile accomplished. I would like to thank the Foundation Trustees for their constant focus on community impact and volunteerism. I’d also like to thank members and team members at Community Choice Credit Union who give their time and financial support so generously to the Foundation. Finally, thank you to our ever-expanding list of community partners who share our Foundation’s commitment to our communities and work tirelessly to ensure the needs of Michiganders are met.

It is a GREAT time to be a part of the Community Choice Foundation.



**Kevin McAlpine, CFRE**

*Foundation Executive Director*  
Community Choice Credit Union



# 15 Years of Giving Big

Founded in 2008, the Community Choice Foundation Scholarship Program is committed to supporting students pursuing their education in Michigan.

The Foundation Scholarship Program encourages the development of the next generation of professionals who will shape the future of our state.

This year celebrates the 15th anniversary of the Scholarship Program, which is one of the largest credit union scholarship programs nationally. We award scholarships to graduating high school seniors, folks going into the skilled trades, and those continuing their post-secondary education.

Equally important to the Community Choice Credit Union Give Big philosophy is volunteerism. Full-time team members are given up to 24 paid hours each year to volunteer for organizations, in their respective communities, that they are passionate about. The Community Choice Board of Directors, members and businesses also believe in helping others by generously supporting our Foundation.

Together, they give their time, talent and treasure each year.

## Community Choice Foundation

### BOARD OF TRUSTEES

The Foundation is managed by a board of trustees charged with ensuring it has a positive, lasting impact on communities in Michigan through charitable giving and volunteerism.

### TRUSTEE MEMBERS

July 2021 – July 2022

- ▶ Robert Biga
- ▶ Tim Crosson, Jr.
- ▶ Martha Schultz
- ▶ Larry Campbell

### TRUSTEE MEMBERS

August 2022 – Present

- ▶ Rob Bava
- ▶ Dan Munro
- ▶ Kelli Wisner-Frank
- ▶ Jennifer Hurren
- ▶ Donna Siejutt
- ▶ Teresa Mayer

## BY THE NUMBERS

**\$100K+**

In Scholarships  
Awarded to **25**  
**Scholars** in 2022

**\$1.4** MILLION

In **Scholarships**  
**Awarded** Since 2009

**295**

**Scholarships** awarded  
to deserving individuals  
since 2009

# Statewide Impact

The Foundation and its volunteers work with local and statewide charitable organizations to address the needs of Michigan residents.

## WE SUPPORT A VARIETY OF CAUSES INCLUDING:



**ENVIRONMENT**



**EDUCATION  
AND LITERACY**



**COMMUNITY**



**CHILDREN  
AND YOUTH**



**HUNGER AND FOOD  
INSECURITIES**



**ANIMAL  
WELFARE**



**SENIORS AND  
VETERANS**

# Supporting Our Shared Future With Scholarships

From 2009 – 2022, Community Choice Foundation has awarded nearly 300 scholarships to deserving individuals seeking a college, trade school, or continuing education programs. These deserving Michigan residents earned more than \$1.4 million in scholarships.

## 2022 SKILLED TRADE SCHOLARS



**Elsa Groenink**

Sechia Institute for Culinary Arts,  
Grand Rapids Community College  
*Baking/Pastry Arts*



**Jake Frisch**

South-East Michigan  
Construction Academy  
*Electrician*



**Emma-Finesse Felton**

L'esprit Academy: Hair, Nails & Skin  
*Esthetics*



**Stephen McCrary**

Detroit Electrical Industry  
Training Center, Local 58  
*Electrician*

## 2022 CONTINUING EDUCATION SCHOLARS



**Alexis Rhodes**

Michigan State University  
*Bachelor's – Human Biology*



**Leeanne Buckley**

Schoolcraft College  
*Associate – Education*



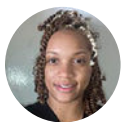
**Brianna Rhoad**

Wayne State University  
*Master's – Educational Administration*



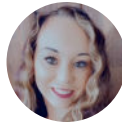
**Maria Green**

Washtenaw Community College  
*Associate – Web Development*



**Dasia Ingram**

Eastern Michigan University  
*Bachelor's – Nursing*



**Melinda Brown**

Grand Rapids Community College  
*Associate – Nursing*



## 2022 GRADUATING HIGH SCHOOL SCHOLARS



**Abigail Thomas**  
Fowlerville High School  
Spring Arbor University  
*Criminal Justice*



**Carly Fraser**  
Redford Union  
Albion College  
*History*



**Ella DeGraw**  
Rochester Hills Stoney Creek  
University of Michigan  
*Biology*



**Grace Cooper**  
Spring Lake High School  
University of Michigan  
*Business*



**Kaden Playford**  
Jonesville High School  
University of Michigan  
*Sports Medicine*



**Katelyn Gyurich**  
Dewitt High School  
Western Michigan University  
*Paper Engineering*



**Levi Mowers**  
Royal Oak High School  
University of Michigan  
*Psychology*



**Lucy Trapp**  
Divine Child High School  
University of Michigan  
*Biochemistry*



**Nicole Cantin**  
Lakeview High School  
Western Michigan University  
*Occupational Therapy*



**Sanya Gupta**  
Rochester High School  
University of Michigan  
*Business/Public Policy*



**Shannon Schulte**  
International Academy Okma  
University of Michigan  
*Business*



**Shlok Patel**  
Oscar A. Carlson High School  
University of Michigan  
*Pharmaceutical Science*



**Sidney Jones**  
Greenhills School  
Wayne State University  
*Psychology*



**Taylor Toth**  
Milford High School  
Michigan State University –  
James Madison College  
*Political Theory/Constitutional Democracy*



**Zoe Nichols**  
Grosse Pointe North High School  
Oakland University  
*Elementary Education*



# It All Starts in the Classroom

We know that our communities thrive when the people who live there are prepared, well informed, and have access to quality education. That's why we've taken our giving one step further.

## STUDENT BACKPACKS

The Foundation provided 3,200 backpacks filled with a variety of school items in Summer 2022. The backpacks included such supplies as notebooks, glue sticks, pencils and crayons. They were distributed across Michigan to students from disadvantaged backgrounds. Several local businesses contributed financially to support this effort. Impacted communities included:

- ▶ Roseville
- ▶ Wyandotte
- ▶ Redford
- ▶ Jackson
- ▶ Hillsdale
- ▶ Holland
- ▶ Livonia
- ▶ Muskegon



## TEACHER BOXES

1,000 teacher boxes filled with \$70 worth of classroom supplies, a coffee mug, gift card and more were distributed to teachers in several school districts around the state.



### Receiving school districts included:

- ▶ Eastpointe Community Schools
- ▶ Southfield Public School District
- ▶ Roseville Community Schools
- ▶ Clarenceville School District
- ▶ Jackson Public Schools
- ▶ Muskegon Public Schools
- ▶ Grant Public Schools

## CASH FOR CLASSROOMS

Five \$1,000 grants were awarded to deserving teachers across Michigan communities. These teachers are committed to helping students get hands-on experiences in money management. Some are using the funds to buy books and resources to support their lessons. Others are establishing stores and economies for their students to explore.

### 2022 Teacher Grant Recipients included:

- ▶ **Andrea Whitsell**, Godwin Heights Middle School, *Grades 6-8*, Wyoming, MI
- ▶ **Dawn McBride**, Garfield Elementary, *Grade 3*, Wyandotte, MI
- ▶ **Diana Rautio**, Silver Springs Elementary, *Grades K-5*, Northville
- ▶ **Kelly Rentschler**, Columbia Elementary, *Kindergarten*, Brooklyn, MI
- ▶ **Stephanie McDowell**, Garfield Elementary, *Grade 2*, Wyandotte, MI

Started in 2021, the Cash for Classrooms program has awarded 20 teachers a total of \$10,000 to support financial education in their classrooms.

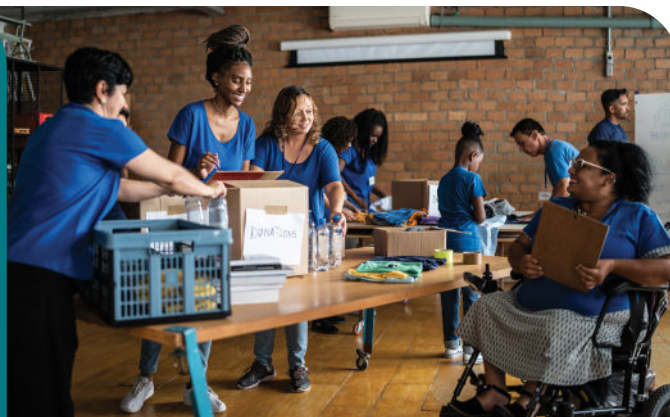


# Providing Hands-On Volunteer Support

From local walks/run to dog rescues to children's charities and veterans to blanket making, Community Choice Foundation is making a hands-on difference throughout Michigan.

**Community Choice team members provided over 9,813 of volunteer support to non-profits like:**

- ▶ Big Brothers Big Sisters
- ▶ Ella Sharp Museum
- ▶ Friends of Foster Kids
- ▶ Gleaners Community Food Bank
- ▶ Maybury Farm



## FISH AND LOAVES

Helping to ensure no one goes hungry in Michigan's Downriver communities, Community Choice partnered with other area credit unions to purchase a van for this client-choice food pantry. In 2022, Fish and Loaves distributed 2.3 million pounds of food to more than 60,000 residents.

## HUMANITARIAN EFFORTS IN UKRAINE

With the credit union industry spanning the globe, we can support important initiatives around the world through World Council of Credit Unions' charitable arm, the World Foundation of Credit Unions (WFCU). Our \$3,000 donation to WFCU supported food, shelter and medical needs to Ukrainian citizens.



# Together, We're Giving Big

It takes a village of individuals across the great State of Michigan to make an impact.

## TEAM MEMBER GRANT INITIATIVE

Community Choice Credit Union team members collectively gave \$4,291 to the Community Choice Foundation in 2022 to support nine charitable organizations through automatic payroll withdrawals. Benefiting organizations included:

### \$500 EACH

- ▶ **All About Animals**, Warren, MI
- ▶ **Big Brothers and Big Sisters**, Jackson MI
- ▶ **Big Brothers and Big Sisters**, Muskegon MI
- ▶ **Cascades Humane Society**, Jackson MI
- ▶ **Friends of Foster Kids**, Sterling Heights, MI
- ▶ **Macomb Foster Closet**, Mount Clemens, MI
- ▶ **Muskegon Humane Society**, Muskegon, MI
- ▶ **Kid's Food Basket**, Holland, MI

### \$291

Community Choice Foundation Scholarship Fund to support scholars around the state.

### 487 EMPLOYEES

Signed up **2,218 times** to volunteer for **650 causes** and nonprofits organizations across Michigan.

### 9,813 HOURS

Volunteered by Team Members in 2022.

### \$22,000

Given by Team Members through payroll deductions.



**Gwyn Fisher**

*Community Choice Credit Union*

## 2022 VOLUNTEER OF THE YEAR

Each year, Community Choice Credit Union recognizes a team member for their outstanding commitment to community service. Known around the credit union for her unwavering generous spirit, Gwyn volunteered 578 hours at local organizations in 2022, giving her time and talents. Gwyn helped out with animal care, education, maintenance and special events at the Northville Community Foundation's Maybury Farms, fundraised for the Detroit Walk to End Alzheimer's, made blankets for Project Linus, and crocheted cradle sets for the Bridget's Cradles organization.

Gwyn leads by example and constantly challenges herself to do new things. Most recently, she's been learning new machinery skills to help with farm maintenance and rotating overnight care with the newest Marino sheep bottle baby. This year Gwyn is focused on helping others discover their passion and joy through volunteering as a member of the 2023 Give Big Committee at Community Choice Credit Union.

Gwyn exemplifies our Give Big philosophy.

Your donation is funding important causes from college scholarships and schools to nonprofits directly serving our communities. In short, neighbors helping neighbors across Michigan.





**communitychoice**  
FOUNDATION



**CommunityChoiceFoundation.org**  
**877.243.2528, x2460**